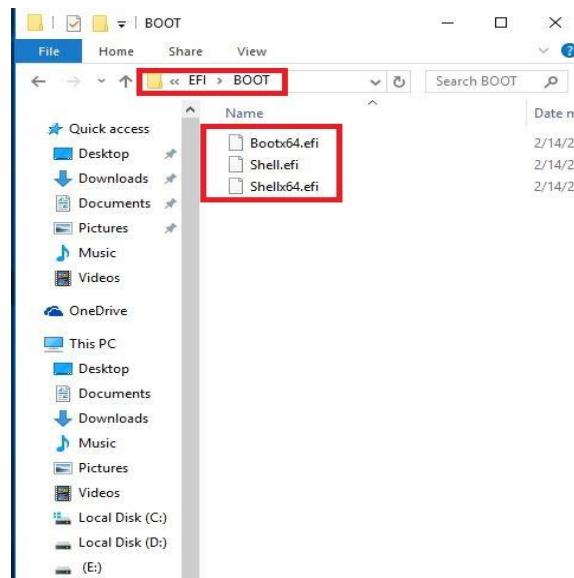


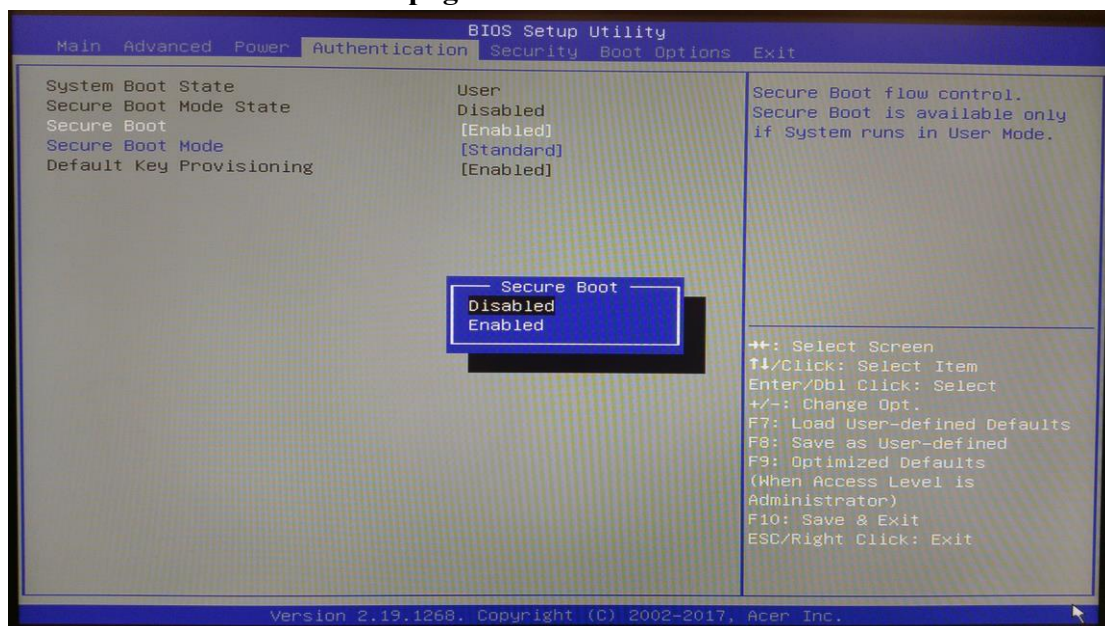
EFI Flash SOP

v1.6

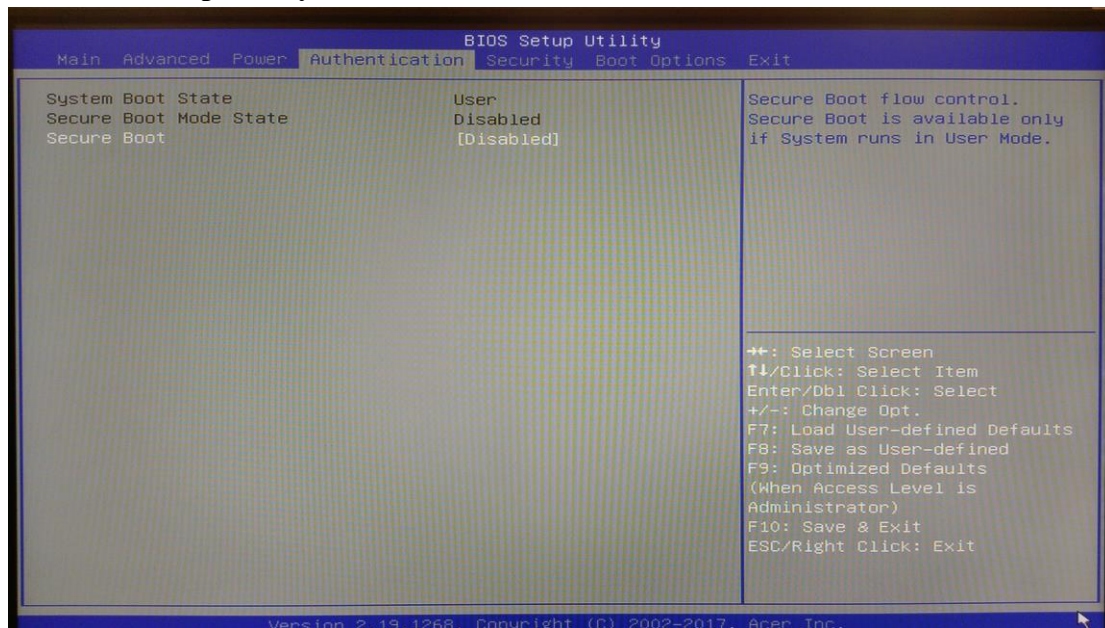
1. Please put the EFI shell relating file to a USB thumb drive and the file path need to be follow as below. (E:\EFI\BOOT, E: is an example. Please check the path of your USB thumb drive) –This is for EFI bootable device.



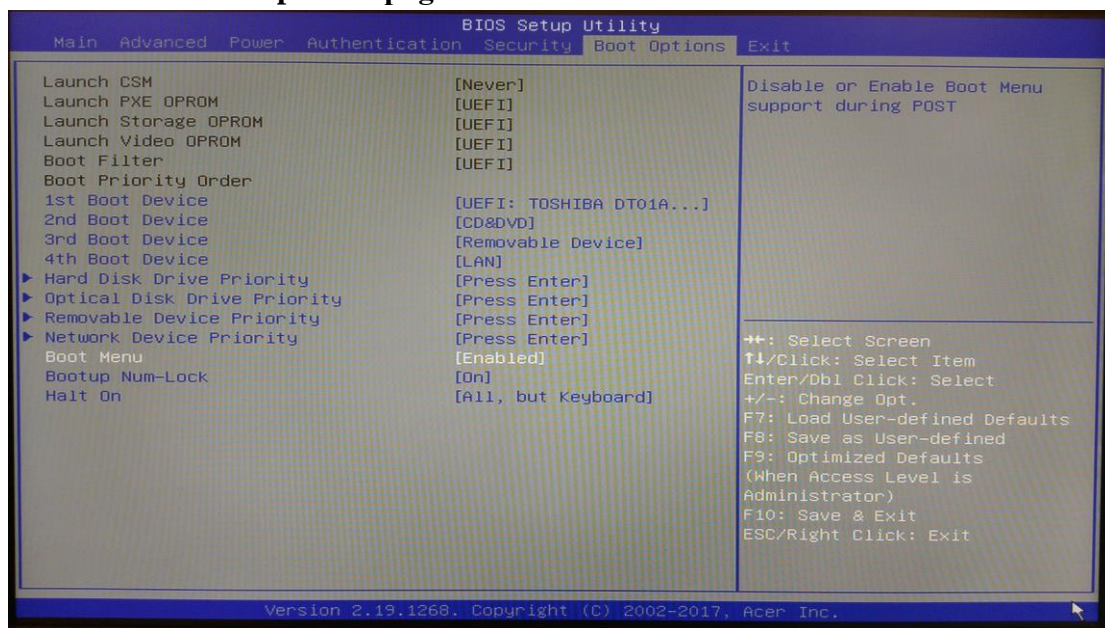
2. Power on the system. When you see the LOGO or hear one short beep, please press “Delete” to enter BIOS Setup Utility.
3. Choose “Authentication” page and select “Secure Boot” to disabled.



4. BIOS Setup Utility will disable “Secure Boot”.

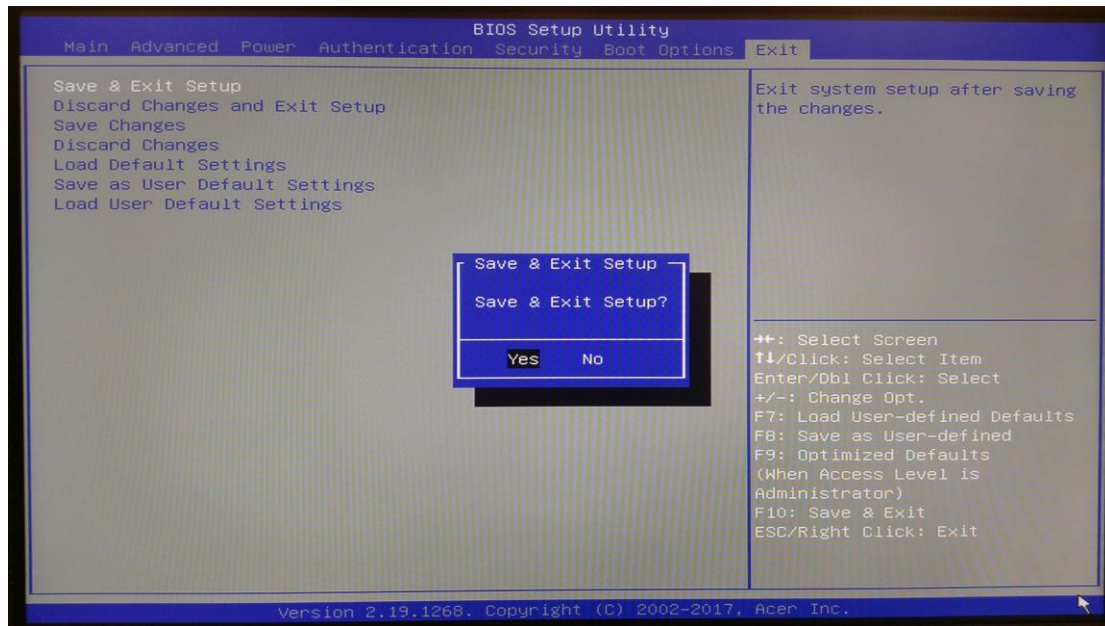


5. Choose “Boot Options” page and select “Boot Menu” to Enabled.

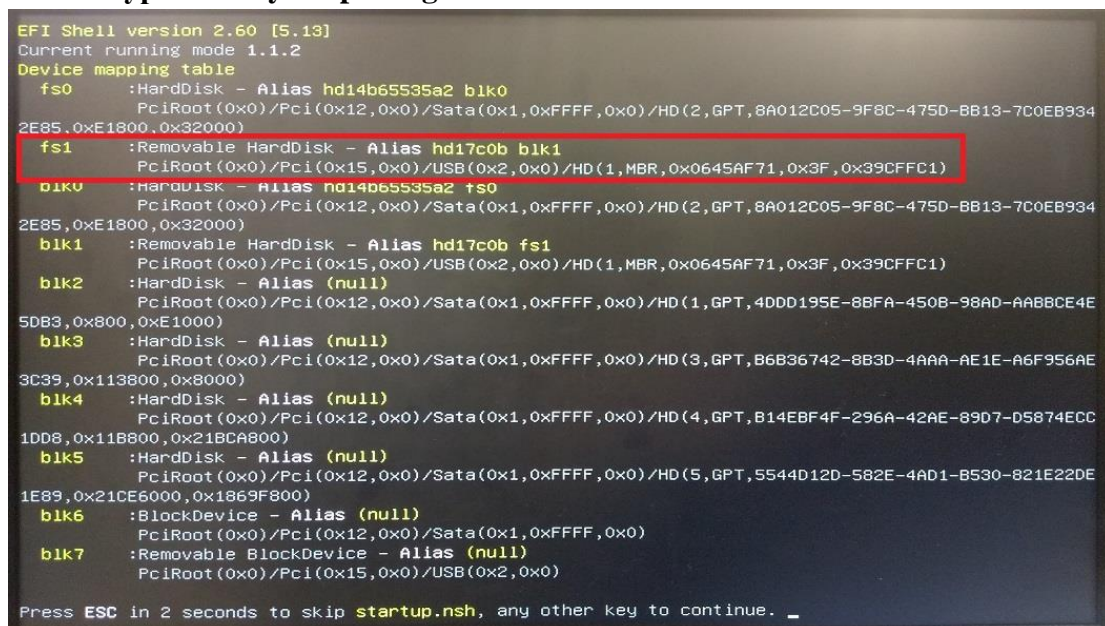


6. Choose “Exit” page and select “Save & Exit Setup” and press “Enter”.

7. Select “Yes” to restart.



8. Press hot key F12 to enter Boot Menu, and select EFI USB thumb drive.
9. Under the EFI system, and choose the Removable BlockDevice group
(The removable BlockDevice location is dynamic.)
E.g. In this figure, users should key in fs1: in Shell command line.
10. Use type “cd” “your package folder name” into EFI folder.

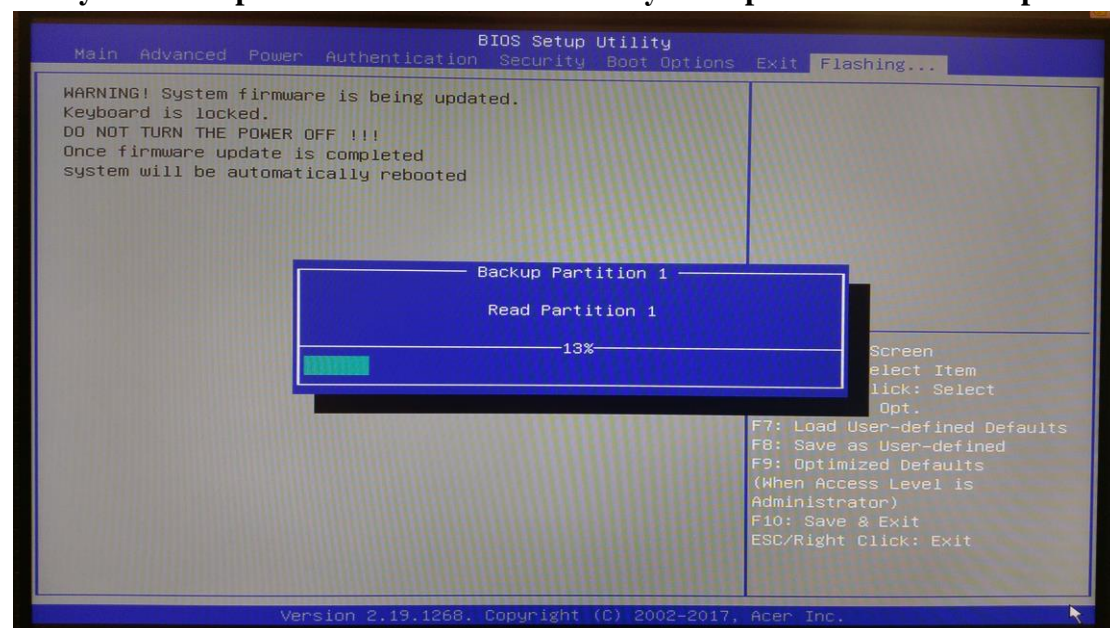


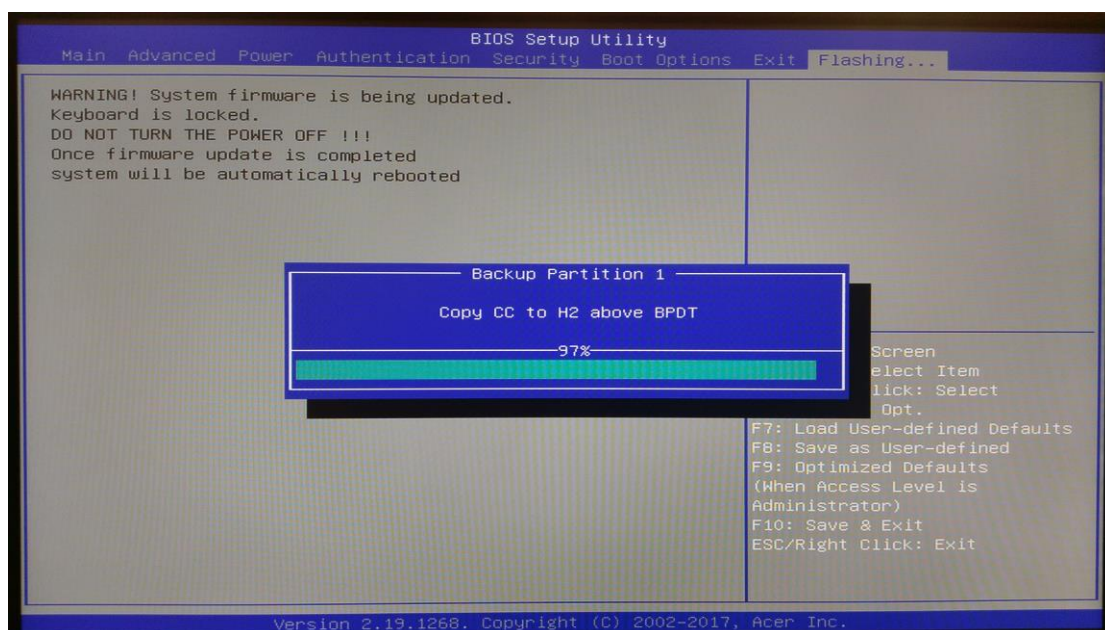
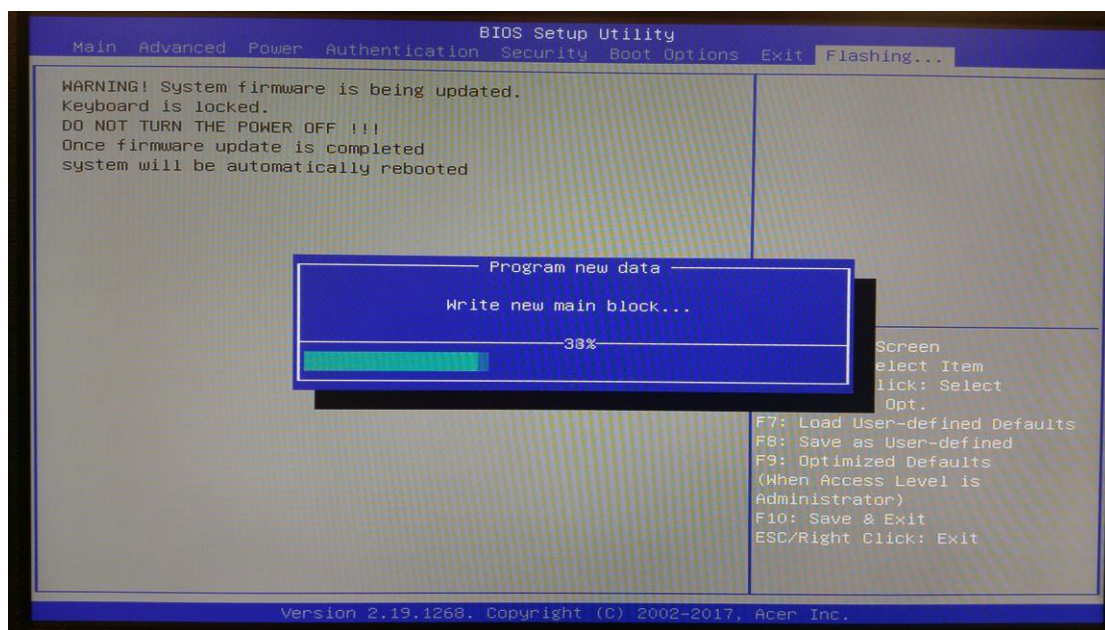
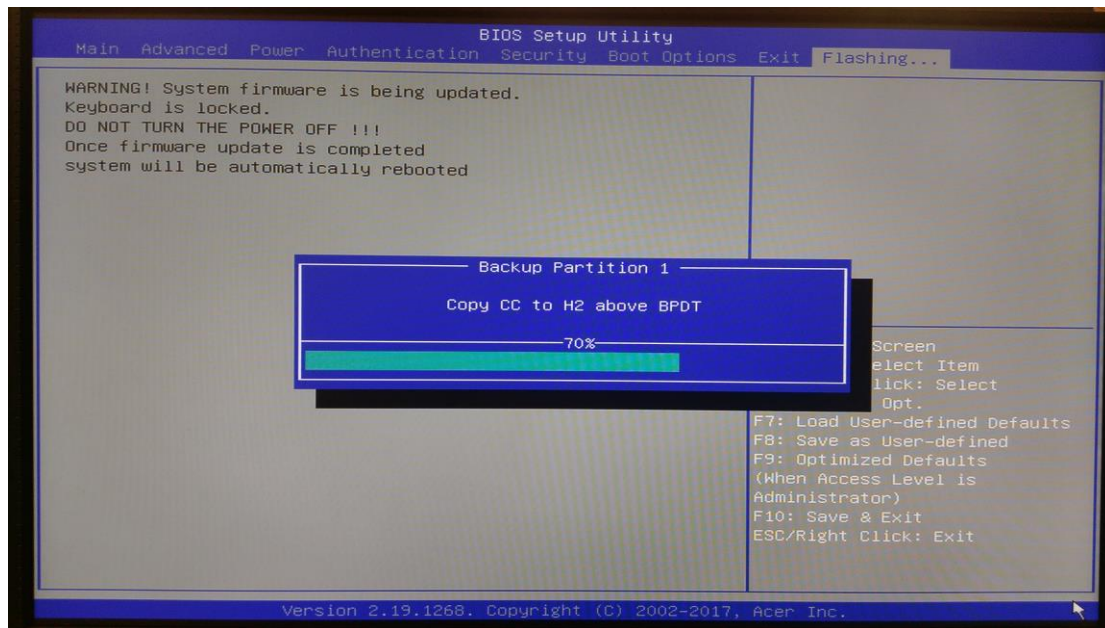
11. Type flash.nsh, and use it to flash the ROM.

```
Shell> fs1:
fs1:\> cd Gore\BIOS\E19\Service\EFI
fs1:\Gore\BIOS\E19\Service\EFI> FLASH.nsh_
```

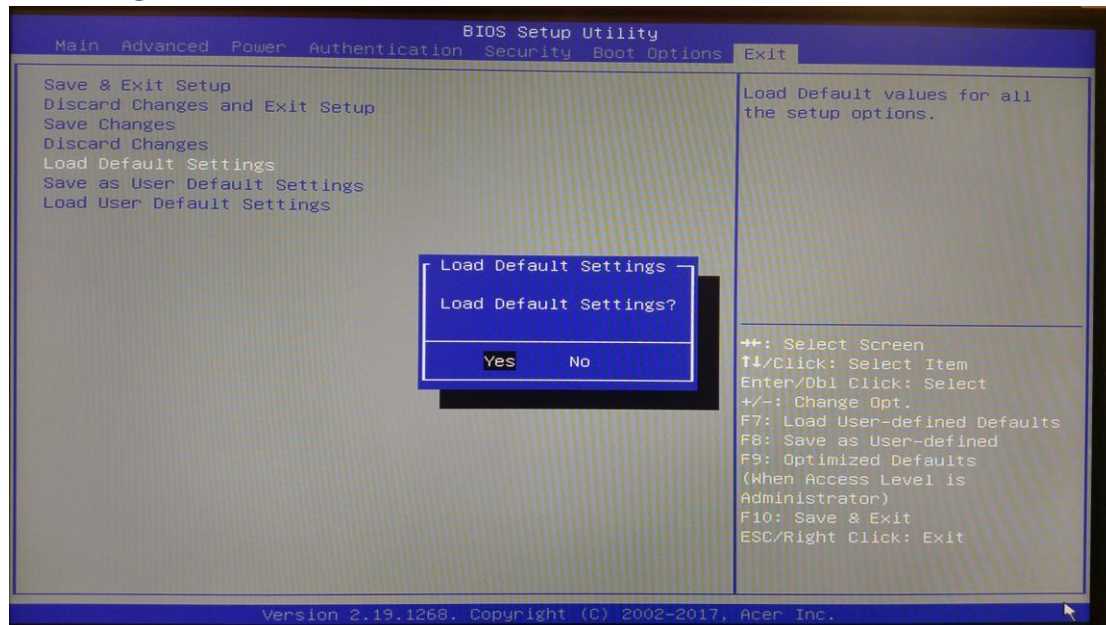
12. Wait Afuefi tools load BIOS, then system auto power off.

13. System auto power on into BIOS “Recovery” and proceed with flash update.





14. Wait it completed, system will reboot automatically. (Recovery completed).
15. Boot system. Please press “Delete” to enter BIOS Setup Menu.
16. Select “Load Default Setting” and press “Enter”. Select “Yes” to load default settings.



17. Select “Save & Exit Setup” and press “Enter”.
18. Select “Yes” to restart.